



# **Animal Adaptations**

Kirsten Linsenhardt  
3rd Grade  
Dallas, TX



## Table of Contents



**Animal Adaptations Overview**



**Migration**



**Hibernation**



**Camoflaug**



**Examples of Animal Adaptations**



**Teacher Resources**



**Student Objectives**





# Animal Adaptations

Animals live in habitats which provide them with food, water, and shelter. Their habitat helps them survive. They also depend on physical features that help them keep safe, build homes, obtain food, and withstand weather. These physical features are called physical adaptations. Some examples of physical adaptations which help animals survive are the shape of a bird's beak, color of the fur on an animal, and the shape of an animal's eyes. An adaptation is when an animal changes in response to its environment.

A photograph of several green leaves on a branch, set against a soft, out-of-focus background of more green foliage. The leaves are vibrant and appear to have some water droplets on them.

# **Types of Adaptations**



# Migration

Some environments undergo extreme temperature changes during different seasons. Animals must migrate to adapt to these environmental changes. Migration is when an animal moves from one place to another as a result of temperature changes.

Animals migrate to:

- \* to find a better climate
- \* to find better food
- \* to find a safe place to live
- \* to find a safe place to raise their young



## **Animals That Migrate**

**Some animals that migrate are:**

- \* humpbackwhales**
- \* salmon**
- \* Canadiangeese**
- \* Monarch butterflies**





# Hibernation

Some animals adapt to changes in their environment by hibernating. Hibernation is an inactive period of time for an animal during an extremely cold season. Animals hibernate, or go into a deep sleep, to survive without food during the winter.

Some animals that hibernate are:

- \* bats
- \* ladybugs
- \* bears
- \* box turtles
- \* groundhogs
- \* squirrels
- \* prairie dogs





# Camouflag

Animals camouflagewhen they change their color or pattern to blend in with the environment. This outward coloration helps animals camouflagewith the plants and surroundings.

Some animals that camouflagewith their environment are:

- \* Polar bears
- \* Arctic fox
- \* Frogs





# Examples of animal adaptations



## American Alligator



The American Alligator lives in shallow lakes, swamps, ponds, rivers, creeks, and canals in the southeastern United States. The alligator has many adaptations to help it survive in the wild:

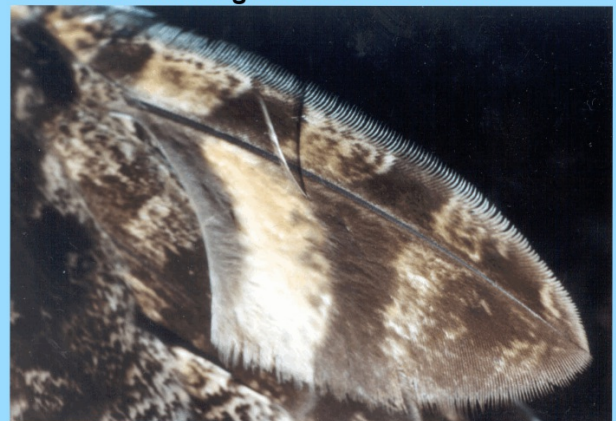
- \* Eyes, ears, and nose are positioned on the alligator's head so it can peek out of the water.
- \* Their eyes and nostrils close on reflex when the alligator goes under water.
- \* Alligators have a transparent third eyelid so they can see while under water.
- \* Alligators do not hibernate. They live dormant under the cold water in winter.

## an owl's feathers

The primary wings of an owl have comb-like edges called 'fluting'. When a normal bird flies, the air rushes over the feathers which causes a gushing noise. The comb-like edges of an owl's feathers breaks down the air into 'mini-turbulences' causing an owl to be silent when it flies. This adaptation helps the owl silently approach its prey and also allows the owl to hear its prey.



Comb-like edges of an owl's feather

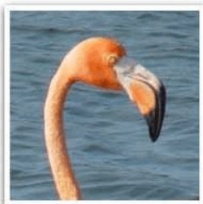


## A Bird's Beak

Birds have unique beaks. Each bird's beak is an adaptation because it helps the bird scoop up its food in a certain way. This adaptation helps birds survive by providing them with a way to feed themselves.



Brown Creeper



Flamingo



Cardinal



Eagle



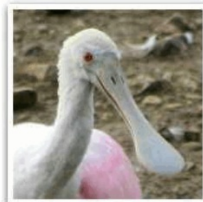
Heron



Woodpecker



Skimmer



Spoonbill



Curlew



Hummingbird



Pelican

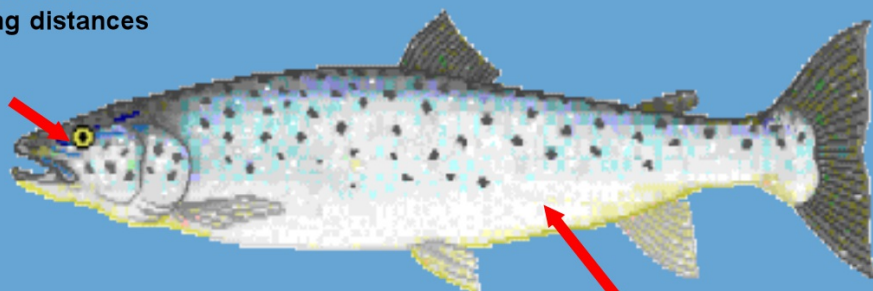


Duck

Fish are adapted to life in water

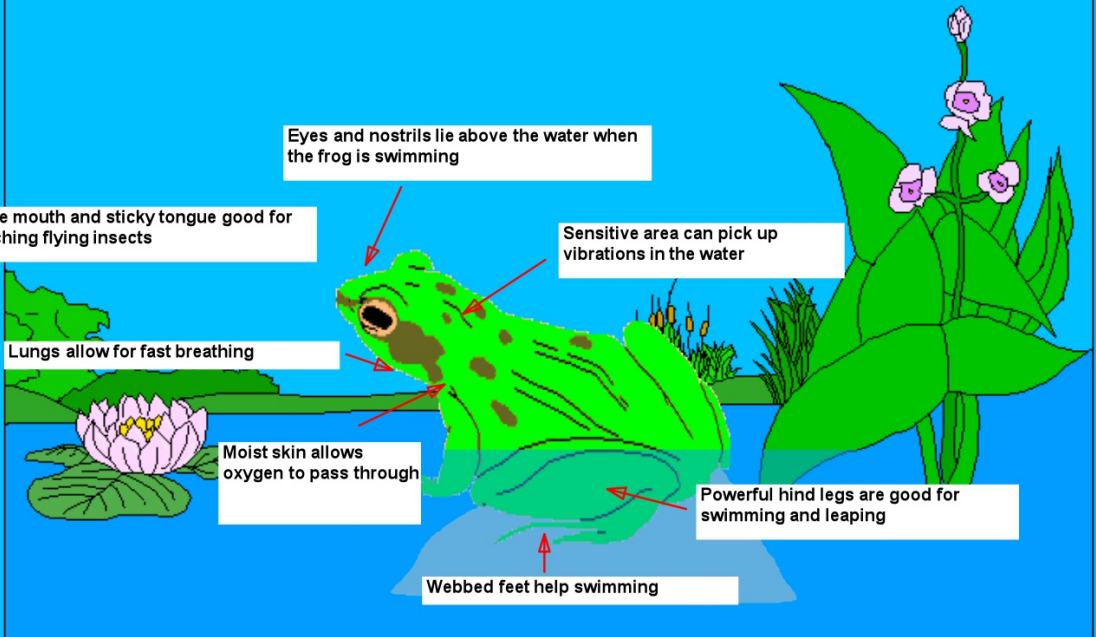
Try and find three other things that allow fish to live in water

Sensitive areas can detect food by smelling over long distances



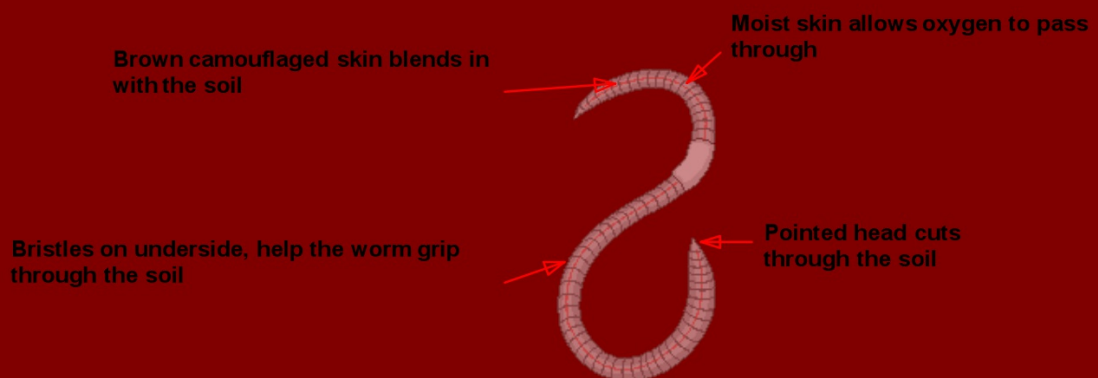
The body picks up vibrations in the water which help the fish avoid danger

**Frogs - Adapted to life in water and land**



## Worms - Adapted to life in soil

A worm hibernates (sleeps) in winter, deep in the soil



## Resources



### **EcoKids- Animal AdaptationsGame**

[http://www.ecokids.ca/pub/eco\\_info/topics/climate/adaptations/index.cfm](http://www.ecokids.ca/pub/eco_info/topics/climate/adaptations/index.cfm)



### **BrainPopJr. Video - Camouflage**

<http://www.brainpopjr.com/science/animals/butterflies/>



### **BrainPopJr. Video - Hibernation**

<http://www.brainpop.com/science/ecologyandbehavior/hibernation/>



### **BrainPopJr. Video - Migration**

<http://www.brainpop.com/science/ecologyandbehavior/migration/>

